

# Instruction manual



OPTICAL SMOKE ALARM WITH A BUILT-IN 3V BATTERY 10 YEARS LIFETIME



Model: ASD-10Q

CE 15  
EN14604:2005/AC 2008  
vfdb 14/01  
1772-CPR-140007  
DoP no: 10Q14



- Within 1 metre of dimmer switches and wiring. Some dimmer switches can trigger a fault in the smoke alarm.
- Within 1.5 metres of fluorescent lights. Electrical impulses can adversely affect the functioning of the smoke alarm.
- Outdoors and in spaces where a large number of insects are found. Small insects in the unit's detection chamber can disrupt the functioning of the smoke alarm.

The labels on the rear side of the smoke alarm contain important information.

**ATTENTION:** The smoke alarm should be temporarily removed during renovation work or structural alterations and stored in a dust-free environment. Clean the smoke alarm with the soft brush from a vacuum cleaner once the day's work is complete, and then replace the smoke alarm, always testing it by pressing the test button once it has been reinstalled.

## INSTALLATION

1. Choose a location that satisfies the conditions as described in Part: Positioning the smoke alarm.
2. Remove the base plate of the smoke alarm (figure 4) by turning the mounting holes (to the left).
3. Mark the mounting holes in the base plate and drill the holes (use a 6 mm drill). If not using the screw plugs, then use a 3 mm drill. Screw the base plate securely onto the ceiling. Make sure that the base plate is tight against the ceiling so that no air circulation above the smoke alarm is possible, which could impede smoke detection. If the opening is too large, this should be remedied using the kit.
4. Place the smoke alarm on the base plate and turn it until the smoke alarm clicks into the base plate. Turn the smoke alarm clockwise (to the right from the OFF to the ON stripe) to secure the smoke



Figure 4

Figure 5



alarm and activate it. (See figure 5)

5. Check that the smoke alarm is working and that the battery has been activated by pressing the test button for more than 2 seconds. A beeping noise that stops of its own accord indicates that the smoke alarm has been activated.

## SOUND TEST

- Test your smoke alarm immediately after installation:
- press the test button for more than 2 seconds
- a loud signal will sound and the LED will flash every 0,5 sec., this will stop once the test button has been released.

Test your smoke alarm monthly and after a period of absence. When the alarm does not sound, have your smoke alarm inspected by the service point or when the smoke alarm is more than 10 years old discard the alarm.

**CAUTION: Never test with fire! Every correctly installed and maintained smoke alarm will increase your potential escape time.**

## FUNCTION AND MEANING OF THE LIGHT AND SOUND SIGNALS:

**Normal situation:** The red LED light will flash once every 5 minutes.

**Alarm:** Whenever the smoke alarm detects smoke, it will emit an alarm, 3 loud beeps pause 3 beeps ect. and the red LED light will flash continuously until the smoke has cleared.

**Low battery signal:** A beeping signal every 40 seconds means that the battery is nearly flat and the smoke alarm needs to be replaced. This signal will sound for 30 days.

When properly maintained, as described under IMPORTANT INFORMATION, the battery and the smoke alarm should continue to work for over a decade before reaching the end of their lifespan. You should remove the smoke alarm and base plate from the ceiling and install a new smoke alarm.

**HUSH Button:** Your smoke alarm is fitted with a pause button (see figure 4). This is the same button as the test button. Press the pause/test button briefly for less than 1 second. Your smoke alarm will then go into a so-called reduced sensitivity mode for 8-9 minutes. The red LED light will flash every 10 seconds to indicate that the Hush button has been activated. The smoke alarm will nonetheless sound the alarm if the smoke is dense or increasing in quantity.

**False Alarm:** Press the test button briefly for less than 1 second to stop the alarm. (See Hush button)

**Pre-alarm status:** The red LED light flashes every second to indicate that the smoke chamber has been contaminated to such an extent that the smoke alarm is close to going into alarm phase and needs to be cleaned. If thorough vacuuming does not help, then the contamination is so serious that the detector must be returned to the factory.

**Dust warning:** 3 short beep signals every 40 seconds means dust in the smoke chamber. You have to clean the smoke alarm by using clean compressed air.

## CAUSES OF FALSE ALARM

The smoke alarm can be activated by steam, condensation, dust, smoke and small insects. These are to be prevented as far as possible. See section: Never fit a smoke alarm. If a smoke alarm is frequently giving a false alarm, it might be necessary to install the smoke alarm in another location.

## Maintenance:

- Test your smoke alarm monthly and after a period of absence. As described in "SOUND TEST"
- Clean the smoke alarm regularly (once a month) using the soft brush from a vacuum cleaner. In addition the smoke alarm can also be cleaned by using a moist cloth.
- The smoke alarm should be temporarily removed during renovation work or structural alterations. Clean the smoke alarm with the soft brush from a vacuum cleaner once the day's work is complete, and then place the smoke alarm back on the base. Always test the smoke alarm by pressing the test button once it has been reinstalled.
- Repairs must be carried out by the manufacturer.
- Never allow the smoke alarm to come into contact with fluids.

**CAUTION: Never apply paint to the smoke alarm and do not cover it.**

## LIMITATIONS OF SMOKE ALARMS

In countries where they are commonly in use, smoke alarms have contributed to reducing deaths and injuries. Independent bodies have established that they were insufficient in around 35% of fires, namely in the following situations:

- Where the battery had been removed or was not working. For that reason, you should test the unit regularly.
- Where smoke is not able to reach the smoke alarm in the event of a fire, meaning the unit cannot be set off. Examples include a fire on another floor where there is no smoke alarm, a fire behind closed doors, a fire in a chimney or smoke being blown away from the smoke alarm. For that reason, smoke alarms are recommended in all rooms, or at any rate on every floor.
- Where the alarm is not heard. A person may not be woken by the alarm if that person had consumed excess alcohol and/or drugs.
- A few fires are not always detected on time, e.g. smoking in bed, if there is no smoke alarm in the bedroom. In the case of escaping from gas or violent explosions, improperly storing explosive products and flammable liquids (petrol, paint, methylated spirit, etc.), electrical faults, acids, children playing with matches (fire).
- The lifespan of smoke alarms is 10 years.

## IMPORTANT INFORMATION IN CASE OF ALARM IN THE EVENT OF A FIRE

- Plan TWO escape routes and practice these with all members of the family.
- Agree upon a location, where everyone goes in case of a fire.

### In the event of a fire:

- Leave the building immediately and go to the agreed location.
- Make sure everyone has left the building.
- Close the doors behind you and never open a warm door. In case of a warm door, choose a different escape route.
- In the event of considerable build-up of smoke, crawl out of the building keeping as close to the floor as possible.
- Wherever possible, breathe through a cloth (preferably moist), or else hold your breath as much as you can. The majority of deaths and injuries are caused by smoke inhalation rather than fire itself.
- Call the fire brigade outside or at the neighbours.
- NEVER go back into a burning building.
- Additional information can be obtained at the local fire department.

## PRODUCT WARRANTY

If used and maintained properly, the manufacturer guarantees this product against material and/or manufacturing faults for a period of 10 years from the original date of purchase by the consumer, with a maximum of 11 years after production date. This guarantee only applies if the smoke detector is activated within 14 months after the production date. Exceptions include damage arising from accidents or misuse. If the product becomes defective within the stated period, then it will be repaired or replaced free of charge. Please do not attempt to repair the product yourself or tinker with it, which will invalidate the warranty.

## DOP (Declaration of Performance)

The DoP can be downloaded on our website [www.fito.eu](http://www.fito.eu)

## INSTRUCTIONS FOR REMOVAL

Do not dispose of your old smoke alarm in the bin, but rather hand it in to a local collection point for small, domestic waste.



## MADE IN EUROPE

### EUROPEAN SUPPLIER:

Fito Products BV  
De Langkamp 12a  
3961 MS WIJK BIJ DUURSTEDE  
The Netherlands  
[info@fito.nl](mailto:info@fito.nl) - [www.fito.eu](http://www.fito.eu)

CE 1772	EN14604:2005/AC 2008	
	Essential characteristics:	Performance:
Fito Products BV De Langkamp 12a 3961 MS Wijk bij Duurstede The Netherlands 15 1772-CPR-140007	Nominal activation conditions/sensitivity, response delay (response time) and performance under fire conditions:	Passed
	Operational reliability:	Passed
	Tolerance to supply voltage:	Passed
	Durability of operational reliability and response delay, temperature resistance:	Passed
Optical smoke alarm, alerts you in the event of fire or smoke, and is suitable for residential buildings.	Durability of operational reliability, vibration resistance:	Passed
	Durability of operational reliability, humidity resistance:	Passed
	Durability of operational reliability, corrosion resistance:	Passed
	Durability of operational reliability, electrical stability:	Passed

## RETAIN THESE INSTRUCTIONS FOR FUTURE USE!

These instructions for use contain important information for correct installation and use of your smoke alarm. Please read this information carefully and retain these instructions for reference.

## SAFETY ISSUES:

- Do not paint to the smoke alarm and do not cover it.
- Never install smoke alarm in rooms with a high humidity, such as bathrooms, showers, kitchens and saunas.
- Test your smoke alarm regularly, once a month and always after a period of absence. Test by pressing the test button for at least 2 seconds, a loud alarm will follow. Keep a distance of at least 50 cm. between the smoke alarm and your ears.
- Never open the smoke alarm, this will invalidate the warranty.

Characteristics certified:	
Ceiling mount	YES
Battery powered	YES
Battery lifetime 10 years	YES
Individual Alarm Indicator	YES
Alarm silence facility	YES
Suitable for installation in a caravan	NO
Interconnectable	NO

## IMPORTANT INFORMATION

- Correct usage will ensure you have valuable extra time to escape. Every correctly installed smoke alarm will increase your potential escape time.
- A smoke alarm is not a fire-prevention measure.
  - Install the smoke alarm in the correct place, if possible in the middle of the ceiling.
  - Keep the smoke alarm out of the reach of children.
  - Test the unit on a monthly basis and after any period of absence. When the alarm does not sound, have your smoke alarm inspected by the service point or when the smoke alarm is more than 10 years old discard the alarm.
  - **CAUTION:** Never test with fire!
  - Clean the smoke alarm regularly (once a month) using the soft brush from a vacuum cleaner. In addition the smoke alarm can also be cleaned using a moist cloth.
  - If the smoke alarm emits a beeping sound every 40 seconds, this means that the battery is nearly flat and that you should replace the smoke alarm.
  - The lifespan of smoke alarms is 10 years.
  - A false alarm can be silenced by briefly pressing the test and silence button for < 1 second.
  - You can make your Model ASD-10Q smoke alarm less sensitive for 8-9 minutes by briefly pressing the test button for < 1 second. The smoke alarm will none-theless sound the alarm if the quantity of smoke is too significant.

## IMPORTANT INFORMATION IN CASE OF ALARM IN THE EVENT OF A FIRE

- Plan TWO escape routes and practice these with all members of the family.
- Agree upon a location, where everyone goes in case of a fire.

### In the event of a fire:

- Leave the building immediately and go to the agreed location.
- Make sure everyone has left the building.
- Close the doors behind you and never open a warm door. In case of a warm door, choose a different escape route.
- In the event of considerable build-up of smoke, crawl out of the building keeping as close to the floor as possible.
- Wherever possible, breathe through a cloth (preferably moist), or else hold your breath as much as you can. The majority of deaths and injuries are caused by smoke inhalation rather than fire itself.
- Call the fire brigade outside or at the neighbours.
- NEVER go back into a burning building.
- Additional information can be obtained at the local fire department.

## SPECIFICATIONS

Power: 3 V (DC) Lithium AA-Battery  
Battery life: 10 years under normal conditions  
Usage: < 8 µA continuous  
< 60 mA in alarm  
Usage temperature: 0 °C - 55 °C  
Humidity: ± 3% at 93% RH at 40°C  
Sensitivity: In accordance with EN14604  
Alarm volume: >85dB at 3 metres  
Certification: Kriwan EN14604 – VdS3131/vfdb 14-01, CE-15, each 10 seconds:  
Battery status  
Smoke chamber pollution  
Smoke sensor function

## POSITIONING THE SMOKE ALARM

### Recommended locations:



Figure 1

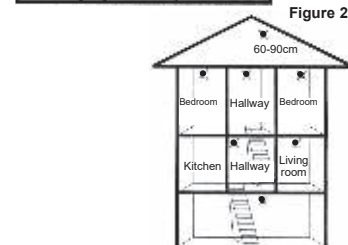


Figure 2

### Optimal protection:

In all rooms, such as bedrooms, living room, study and suchlike, as well as along escape routes such as corridor or hallway.

### Maximum protection:

- smoke alarm in all rooms (with the exception of bathrooms, kitchen, garages, etc.)
- Heat alarms can be installed in bathrooms, kitchens, airing cupboards, utility rooms, etc. within 5 metres of a potential source of fire.

- The smoke alarm should preferably be installed in the middle of the ceiling, at least 50 cm from the wall.
- In the case of pitched roofs, install the smoke alarm on the sloping wall, at least 90 cm (measured vertically) from the ridge of the roof.
- Ensure that the smoke alarm can always be reached for testing and cleaning.

### Never fit a smoke alarm:

- In bathrooms, kitchens, shower rooms, garages, etc. Places where a smoke alarm may go off needlessly due to condensation, normal smoke or gases. A smoke alarm should be fitted at least 5 metres from such sources of smoke.
- Places where the temperature may exceed 55 °C or fall below 0 °C, e.g. attics, just above a fire-place, etc.
- In the vicinity of (or adjacent to) decorative objects, doors, sockets, lights, fittings, windows, wall ventilators, etc. which could mean that smoke does not reach the smoke alarm. Minimum 50cm away.
- Surfaces that are usually warmer or colder than the rest of the room. Differences in temperature can prevent smoke from reaching the smoke alarm.
- Adjacent to or directly above stoves or heaters.
- In very high or difficult to reach places. This makes it hard to reach the smoke alarm to test or clean it.
- In very dusty or dirty places. Accumulation of dust will prevent smoke from reaching the smoke chamber and in time will lead to a false alarm.